

BROADBAND

A PATH FORWARD

WE WILL COVER

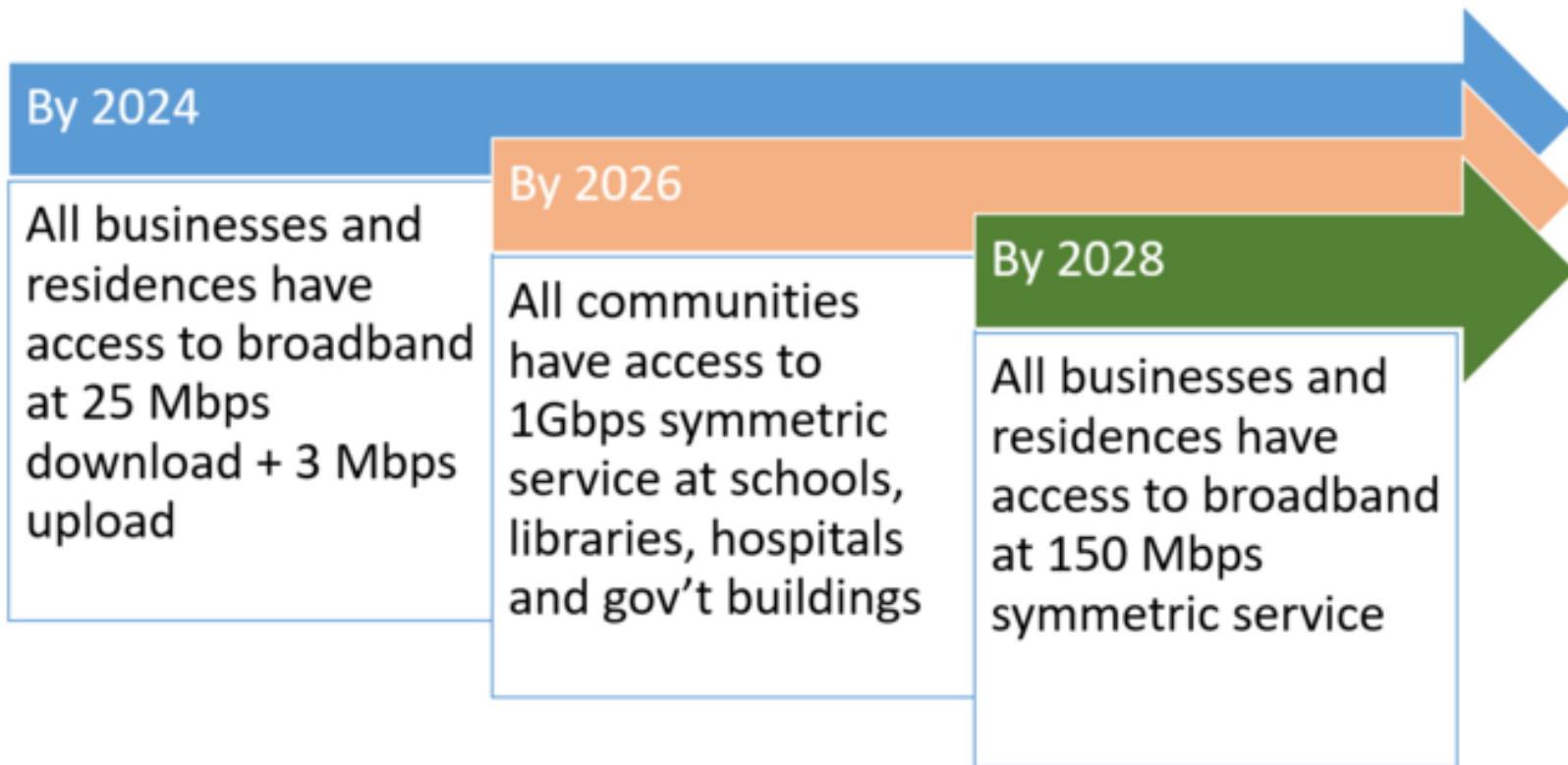
Today's Challenges

Costs

Network Design

Partners

Today's Challenge Is To Meet These State Goals



COSTS TO
MEET TIME
FRAME

NETWORK &
TIME FRAME

FIBER
WIRELESS
HYBRID



\$500,000 INVESTMENT
\$85,000,000 INVESTMENT
GRANTS, LOANS, LUDS


**3 OPTIONS FOR
REVIEW**





\$500,000
YEARLY INVESTMENT
FROM TAXING
AUTHORITY


OPTION 1
NO DEBT
IT WOULD TAKE 170
YEARS TO COMPLETE
THE PROJECT





\$85,000,000
CONSTRUCTION LOAN
20 YEARS AT 2%

OPTION 2
ISPs WOULD
NEED TO PAY
\$358,333.33 PER
MONTH TO
COVER LOAN





GRANTS
LOANS
LUDS

OPTION 3
WORK
COMPLETED AS
GRANTS AND
LOANS ARE
AVAILABLE



Speeds

> 500
Mbps

Medium 25 -
500 Mbps

Low 10 - 25
Mbps

Very Low 0 - 10
Mbps

No Service

Legislative Districts

County Boundaries

2 of 2

Jefferson County

Survey 299
Responses

Average 5,663.94
Download
Speed

Average 10.86
Upload Speed

JURISDICTION Jefferson
LABEL

JURISDICTION Jefferson County
NAME

COUNTY 16
NUMBER

COUNTY FIPS 53031
CODE



Results Map Disclaimer: The average speeds reflected on the map will be skewed because the people most likely to use the service are those who live in the most densely populated areas. This is not a true representation of the average speeds across the entire county.



NETWORK SOLUTIONS

FIBER

WIRELESS

HYBRID SOLUTION

OTHER

FIBER

FASTEST SPEEDS

GREATER BANDWIDTH

WIRELESS

FASTER TO DEPLOY

SLOWER, LESS BANDWIDTH

HYBRID

DEPLOY FOR NEIGHBORHOODS

COVERAGE FOR REMOTE SITES






PARTNERS
NOANET
GOVERNMENT
PRIVATE PARTNERS
OTHER

PARTNERSHIPS
IF WE WORK
WITH PARTNERS,
WE CAN COVER
THE AREA
SOONER





IT IS NOT SIMPLE
HOW TO MOVE FORWARD

QUESTIONS

FOR THE PUD
TO MAKE
PROGRESS WE
NEED
ACHIEVABLE
GOALS

